

## About Samsung Electronics Co., Ltd.

Samsung Electronics Co., Ltd. inspires the world and shapes the future with transformative ideas and technologies. The company is redefining the worlds of TVs, smartphones, wearable devices, tablets, cameras, digital appliances, printers, medical equipment, network systems, and semiconductor and LED solutions. For the latest news, please visit the Samsung Newsroom at [news.samsung.com](http://news.samsung.com).

## For more information

For more information about Samsung GM85, visit [www.samsungmedicalsolution.com](http://www.samsungmedicalsolution.com)

GM85 1.5-170718-EN

PREMIUM  
MOBILE  
DIGITAL  
RADIOGRAPHY

# COMPACT & POWERFUL



## GREAT TO MOVE GM85

	GM85
HVG (Generator)	32 / 40 kW
Tube	300 kHU
Wireless Detector	S4335-W, S4343-W, S3025-W
kV Range	40 ~ 150 kVp (1 kV step)
mAs Range	0.1 ~ 500 mAs

Copyright © 2017 Samsung Electronics Co. Ltd. All rights reserved. Samsung is a registered trademark of Samsung Electronics Co. Ltd. Specifications and designs are subject to change without notice. Non-metric weights and measurements are approximate. All data were deemed correct at time of creation. Samsung is not liable for errors or omissions. All brand, product, service names and logos are trademarks and/or registered trademarks of their respective owners and are hereby recognized and acknowledged.

**SAMSUNG**

EXPERIENCE  
A New Healthcare  
Solution

**SAMSUNG**



# ULTIMATE DRIVING EXPERIENCE

going anywhere with advanced mobility



## Ultra-Compact

Access anywhere with ultra-compact GM85 even in narrow hallways or tight spaces. Collapsible column makes navigation safe by securing a clear view while moving the system.

## Ultra-Light

Ultra-light GM85 only weighs 349 kg (769 lb) and allows upto 3 more people on elevator.

- based on elevator with 600 kg (1323 lb) load capacity

555 mm

21.9 in

349 kg

769 lb





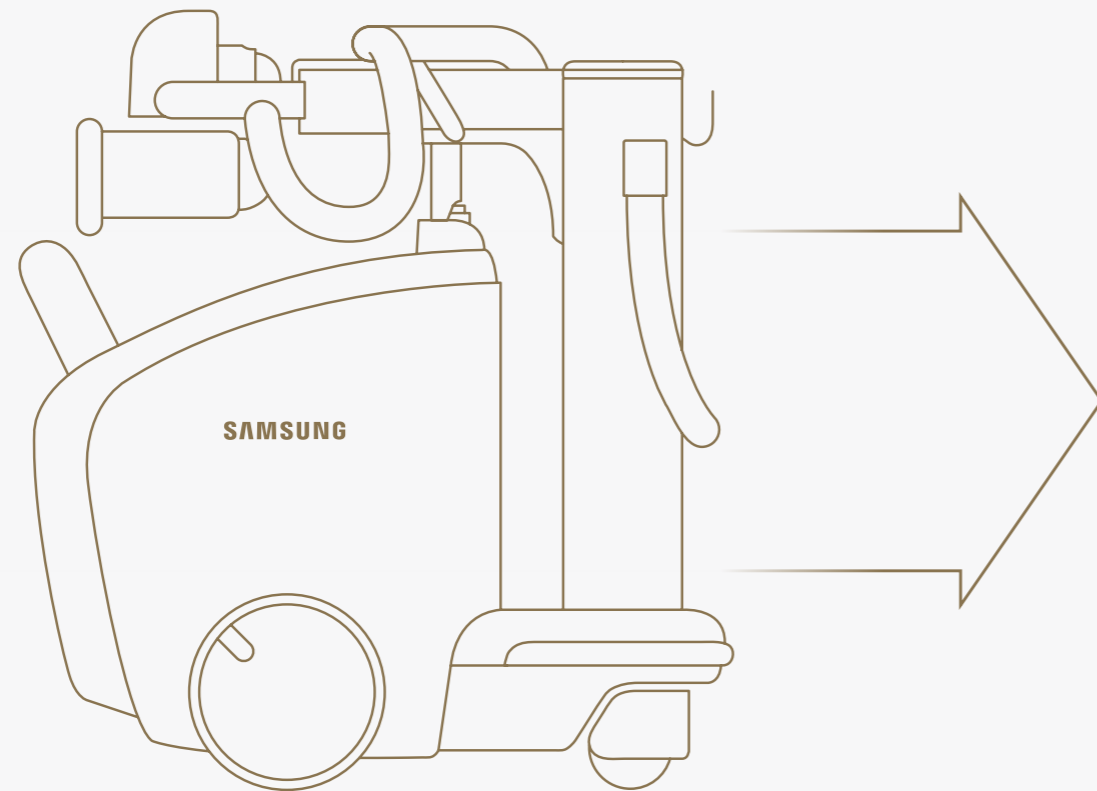
# INNOVATIVE ENHANCED USABILITY

to decrease user fatigue and serve more patients

New battery technology guarantees fast charging and efficient battery management. GM85 powers up to 100 % in only 2~4 hours and long-lasting battery gives you the power to keep going for all day without additional charging.

## Time-saver Battery

- Charging time will vary according to the capacity of the wall outlet, which will be different for each country
- Fully charged battery supports 220 shots and 20 km (12.4 mile) of moving distance
- Test condition : 80 kVp/400 mA/5 msec/30 sec intervals, moving in maximum velocity (5.6 km/h)



2~4 h 

Fast charging time



All Day 

All day operation without additional charging

# INNOVATIVE ENHANCED USABILITY

to decrease user fatigue and serve more patients

Experience GM85's unique innovation features such as SID Guide and S-Align™, enabling users to save time and optimize workflow. Extensive long tube reach (1355 mm / 53.3 in), easy quick positioning, large storage and intuitive multi-touch features also provide superior user convenience.

## SID Guide

- According to protocols
- 3 types of SID (100 / 130 / 180 cm)
- Applied automatically

SID GUIDE

John Doe, 01  
T-20160721150342 | 1945-01-02 | Female

80 kVp	250 mA	5 mSec
	Medium	Large
0.1mm Cu	Manual	SimGrid

Procedure	Protocol
CHEST AP	CHEST AP
ABDOMEN SUPINE	
PELVIS AP	

17 X 13 inch | -30° | 30° | 0°

Suspend | End Exam | Auto Send

## SID Guide

SID Guide (Source to Image Distance) supports detailed device positioning with multiple SID settings.

## S-Align™

S-Align™ displays the detector's angle to the THU for precise alignment and enhances the quality of imaging.

30°

S-Align™



# SUPERIOR IMAGE QUALITY

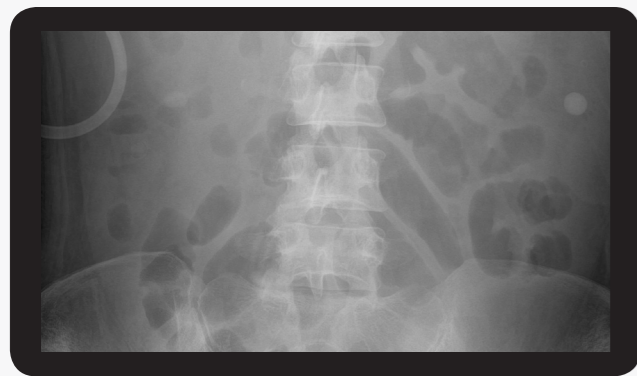
for advanced imaging and precise diagnoses

GM85 provides advanced patient care with diagnostic confidence through leading-edge imaging functions such as SimGrid™, TLE (Tube & Line Enhancement) and Bone Suppression along with S-Vue™ and S-Detector™.

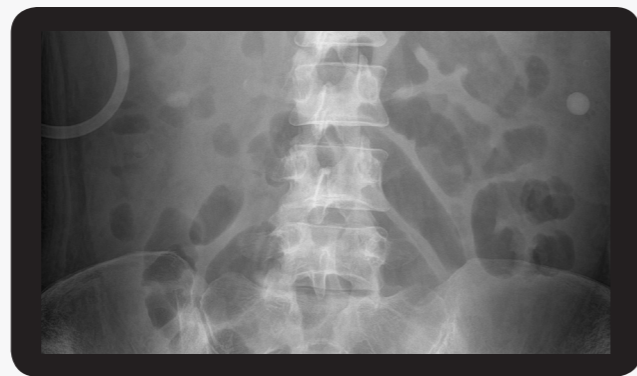
## SimGrid™\*

\* optional

SimGrid™ produces superior image quality compared to images captured on systems without the use of a conventional grid through a reduction of scatter radiation effects, generating improved image contrast.



Case 1. Abdomen Supine before SimGrid™

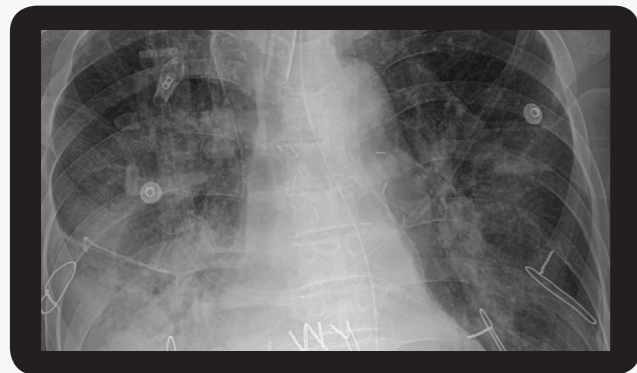


Case 2. Abdomen Supine after SimGrid™

## TLE

Tube & Line Enhancement

Improve clarity of tube and line in chest images with Tube & Line Enhancement feature. With a single on-screen click, the companion image is created without additional settings or x-ray exposure, streamlining the process.



Case 1. Chest AP



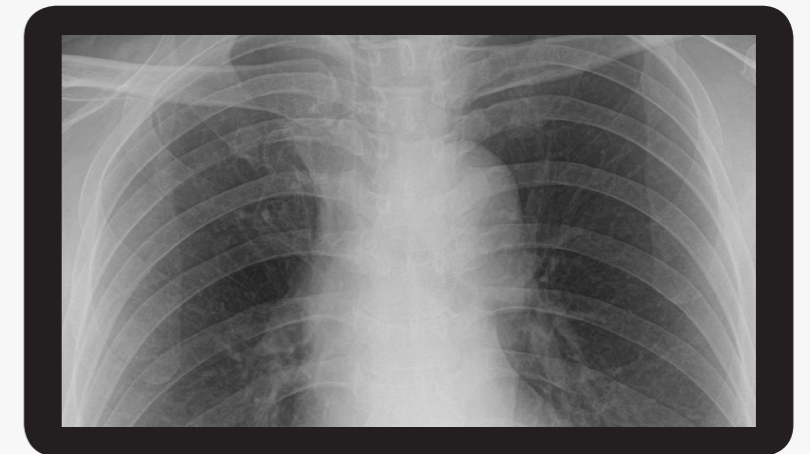
Case 2. Chest AP with TLE

## Bone Suppression\*

\* optional

Without additional setting or exposure, Bone Suppression improves the clarity of soft tissues by suppressing the appearance of bones in chest images, which improves your ability to detect nodules. You can easily create the companion image with just a click on the screen.

Before



Case 1. Chest PA before Bone Suppression

After



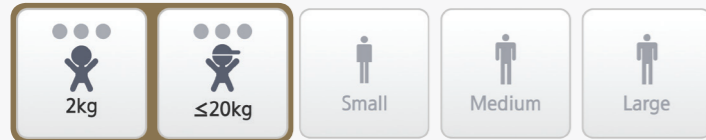
Case 2. Chest PA after Bone Suppression

# ALWAYS CARING FOR OUR CHILDREN

with child-friendly features and design

## Pediatric Exposure Management

Patient Size



6-stage weight dependent imaging

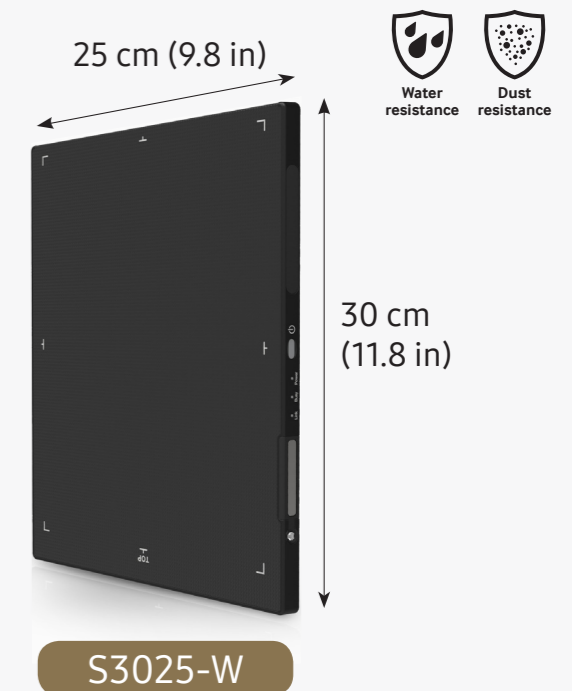
Optimized 6-stage weight dependent imaging enables pediatric patients to avoid unnecessary x-ray exposure using precise dose management, resulting in superior image quality. Child-friendly design stimulates pleasant imagination and provides a playful environment for both parents and children.

## S-Detector™

Small-size wireless detector (S3025-W) optimized for child care in NICU (Neonatal Intensive Care Unit)

- Larger size detectors (S4335-W, S4343-W) are also available
- S-Share™\* : Sharing S-Detector™ (S4335-W, S4343-W, S3025-W) between GM85 and other Samsung DR systems

\* optional



## Pediatric cover design\*

\* optional

