

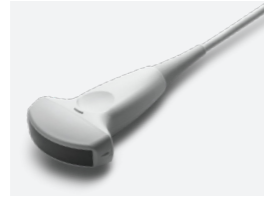
Comprehensive selection of transducers

Curved array transducers



CA2-8AD

• Application : abdomen, obstetrics, gynecology



C2-8

• Application : abdomen, obstetrics, gynecology



C2-5

• Application : abdomen, obstetrics, gynecology



CF4-9

• Application : pediatric, vascular

Linear array transducers



LA3-16AD

• Application : small parts, vascular, musculoskeletal



LN5-12

• Application : small parts, vascular, musculoskeletal



L5-12/50

• Application : small parts, vascular, musculoskeletal



L4-7

• Application : abdomen, small parts, vascular, musculoskeletal



LS6-15

• Application : musculoskeletal

Volume transducers



VN4-8

• Application : abdomen, obstetrics, gynecology



EV2-10A

• Application : obstetrics, gynecology, urology



EVN4-9

• Application : obstetrics, gynecology, urology



ER4-9

• Application : obstetrics, gynecology, urology

Phased array transducer



PN2-4

• Application : abdomen, cardiac, vascular



SP3-8

• Application : abdomen, pediatric, cardiac



DP8B

• Application : cardiac, vascular



DP2B

• Application : cardiac

Endo-cavity transducers

* This product, features, options, and transducers are not commercially available in all countries. Due to regulatory reasons, their future availability cannot be guaranteed. Please contact your local sales representative for further details.
 * This product is a medical device, please read the user manual carefully before use.
 * S-Detect™ for Breast is not available in Canada.
 * Strain value for ElastoScan™ is not applicable in Canada and the United States.

SAMSUNG MEDISON CO., LTD.

© 2020 Samsung Medison All Rights Reserved.
 Samsung Medison reserves the right to modify the design, packaging, specifications, and features shown herein, without prior notice or obligation.

CE 0123

CT-HS40 V1.03-OB-IMC-200327-EN

Establish everyday efficiency

Ultrasound system

HS40 Powered by CrystalLive™



Scan code or visit
www.samsunghealthcare.com
 to learn more



EXPERIENCE
 A New Healthcare
 Solution

SAMSUNG

Powered by CrystalLive™

CrystalLive™ is Samsung's up-to-date ultrasound imaging engine with enhanced 2D image processing, 3D rendering and color signal processing, to offer outstanding image performance and efficient workflow during complex cases.

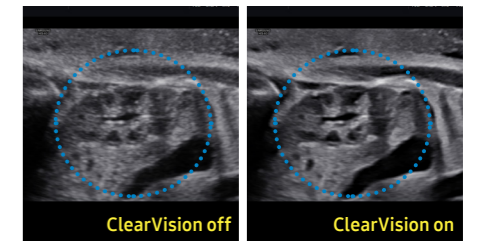


Extraordinary image quality for a clearer view

With the astonishingly clear view provided by Samsung's advanced imaging technologies, you can make clinical decisions with greater confidence.

ClearVision

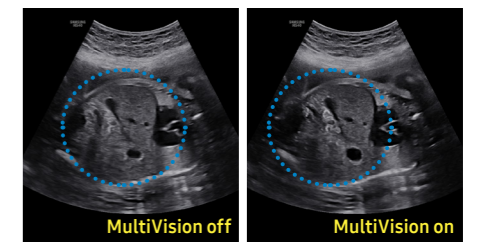
The noise reduction filter improves edge enhancement and creates sharper 2D images for optimal diagnostic performance. In addition, ClearVision provides application-specific optimization and advanced temporal resolution in live scan mode.



Fetal kidney

MultiVision

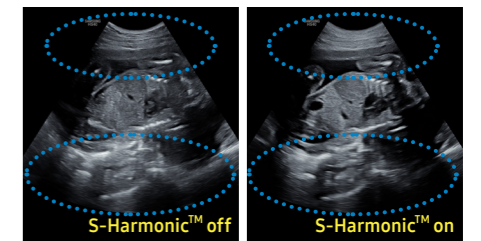
MultiVision controls ultrasound beam electronically by steering, and compounds many scan lines for better image. MultiVision provides remarkable spatial and contrast resolution with even greater artifact suppression than ever before.



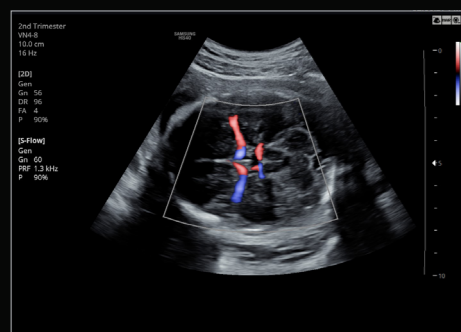
Fetal abdomen

S-Harmonic™

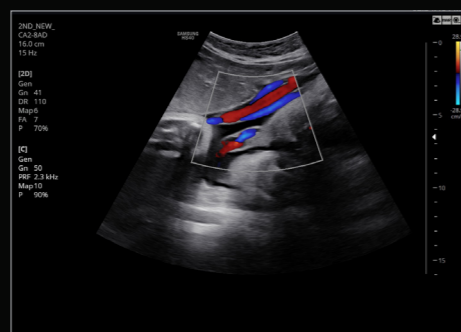
S-Harmonic™ mitigates the signal noise, enhances contrast, and provides uniform image performance of overall image area from near-to-far.



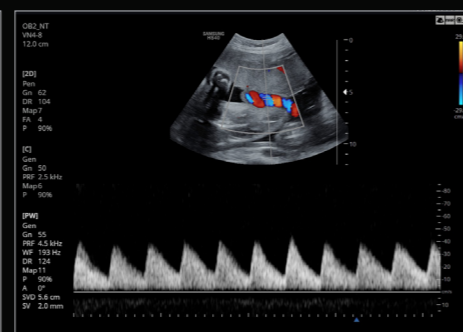
Fetal abdomen



Fetal brain in S-Flow™



Umbilical cord in color Doppler



Umbilical cord in PW



Fetal heart in color Doppler



Fetal heart



26 weeks fetal face in 3D

Enhanced tools for optimized care

Samsung's advanced yet budget-friendly tools, previously exclusive to our premium ultrasound platforms, enhance obstetric and gynecological exam capabilities for efficient and effective care.

LaborAssist™ *

LaborAssist™ is a function that provides information of the progress of delivery by the automatic measurement of AoP (Angle of Progress) and the direction of the fetal head. This not only helps in effective communication between the healthcare professionals and mothers, but also assists in deciding a delivery method for the healthcare professionals.

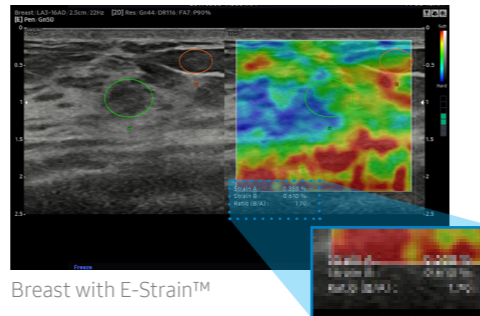
* AoP complies with the metrics specified in the ISUOG Guideline.



LaborAssist™ demo video animation

E-Strain™ *

E-Strain™ is designed to enable quick and easy calculation of the strain ratio between two regions of interest for day-to-day practice. Simply by setting the two targets, you can receive accurate, consistent results and make informed decisions in many types of diagnostic procedures.



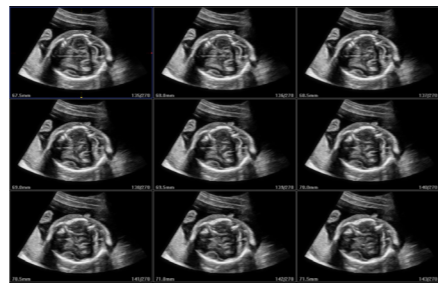
Breast with E-Strain™

3D XI *

Comprised of a suite of outstanding imaging applications (Multi-Slice View, Oblique View, and XI VOCAL), 3D XI offers precise control over 3D/4D volume data manipulation to improve diagnostic accuracy.

5D NT *

5D NT™ provides the midsagittal plane view automatically by rotating and magnifying the images when measuring the nuchal translucency (NT) of the fetus in early weeks.



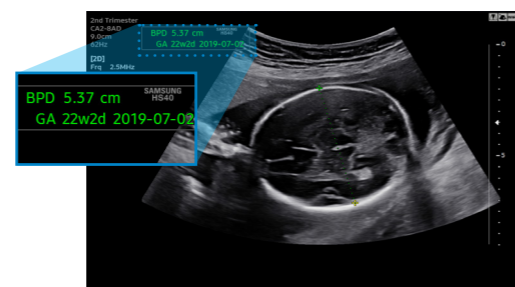
Fetal brain in MSV

2D Follicle *

2D Follicle is a function to measure the size of follicles based on 2D image and to provide information about the status during gynecologic examination.

BiometryAssist™ *

A semi-automatic technology for biometric measurement, BiometryAssist™, enables users to measure the growth of the fetus more quickly and with greater accuracy while maintaining exam consistency.



BPD measurement with BiometryAssist™

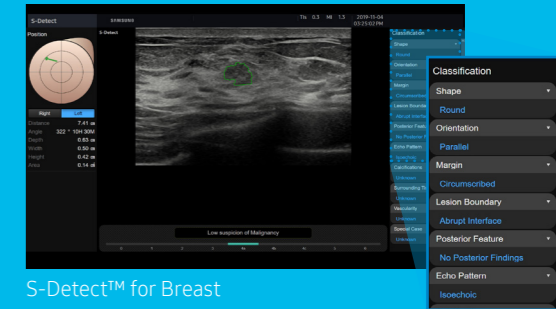
ACE

ACE is Samsung's new package name including various advanced features such as S-Detect™, etc. to help healthcare professionals make quick and accurate decision.

S-Detect™ for Breast *

The feature, which analyzes selected lesions in the breast ultrasound study and shows the analysis data, applies BI-RADS ATLAS* (Breast Imaging-Reporting and Data System, Atlas) to provide standardized reporting; and helps diagnosis with the streamlined workflow.

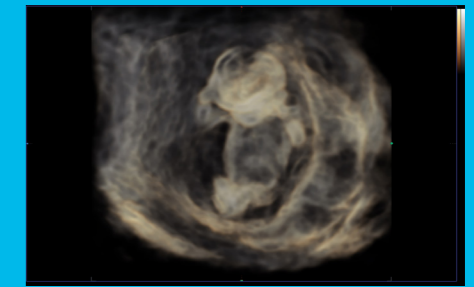
* It is a registered trademark of ACR and all rights reserved by ACR.



S-Detect™ for Breast

CrystalVue™ *

CrystalVue™ is an advanced volume rendering technology that enhances visualization of both internal and external structures in a single rendered image using a combination of intensity, gradient and position.



Fetus with CrystalVue™

RealisticVue™ *

RealisticVue™ displays high resolution 3D anatomy with detailed expression and realistic depth perception. User selectable light source direction creates intricately graduated shadows for better defined anatomical structures.



Fetal face with RealisticVue™

EzExam+™ *

EzExam+™ enables you to build or use a predefined protocol, and assign protocols for examinations that are regularly performed in the hospital in order to reduce the number of steps that you have to go through.



EzExam+™

* Optional Extra

QuickPreset

With one touch, the user can select the most common transducer and preset combinations. QuickPreset maximizes efficiency to make a full day of scanning simple and easy.



CA2-8AD

User-friendly design

HS40's ground-breaking design was inspired by users' ideas and suggestions during development. Every detail, such as the fully articulating monitor arm, the operating panel which can be easily adjusted to different heights, and additional storage space, has been created to make the work environment more comfortable. And it is this focus on the user that has led to the product winning a prestigious 2017 iF Design Award.



21.5 inch
LED monitor



10.1 inch
touch screen



Solid State Drive (SSD) *

The HS40 uses advanced solid state drives. These stable and dependable drives allow faster boot-up, better frame rates, and fast processing speeds.



BatteryAssist™

BatteryAssist™ provides the system with battery power. It enables users to perform scans and transport the ultrasound system to other locations in environments where AC power may not be available temporarily.

Articulating monitor arm

With a wide range of motion, the fully articulating monitor arm adapts to your changing needs.



Height-adjustable operating panel

Adjust the operating panel to your preferred height without straining, thanks to the smooth upward and downward motion of the gas lift.



Endocavity transducer holder *

It provides EC transducer holder for stable mounting of the endocavity transducer when performing gynecological scanning.



Gel warmer *

Two-level adjustable gel warmer maintains ultrasound gel at a comfortable temperature.



Side storage *

The side storage is ideal for storing a tablet, patient charts, or other items that you need to keep close at hand.



* Optional Extra

Rear tray *

HS40's rear tray provides extra storage space for the endocavity transducer and other items.



Samsung Healthcare Cybersecurity

To address this emerging need for cybersecurity, Samsung provides a solution to support our customers by offering the tools to protect against cyberthreats that may compromise invaluable patient data and ultimately degrade the quality of care.



Intrusion Prevention



Access Control



Data Protection