

# Comprehensive Selection of Transducers

## Curved Array Transducers



Application : abdomen, obstetrics, gynecology



Application : abdomen, obstetrics, gynecology



Application : abdomen, pediatric, vascular

## Linear Array Transducers



Application : small parts, vascular, musculoskeletal



Application : small parts, vascular, musculoskeletal



Application : abdomen, cardiac, vascular

## Phased Array Transducer

## Endo-cavity Transducers



Application : obstetrics, gynecology, urology



Application : obstetrics, gynecology, urology



Application : cardiac

## CW Transducer

### About Samsung Medison CO., LTD.

Samsung Medison, an affiliate of Samsung Electronics, is a global medical company founded in 1985. With a mission to bring health and well-being to people's lives, the company manufactures diagnostic ultrasound systems around the world across various medical fields. Samsung Medison has commercialized the Live 3D technology in 2001 and since being part of Samsung Electronics in 2011, it is integrating IT, image processing, semiconductor and communication technologies into ultrasound devices for efficient and confident diagnosis.

\* This product, features, options, and transducers are not commercially available in all countries. Due to regulatory reasons, their future availability cannot be guaranteed. Please contact your local sales representative for further details.

### SAMSUNG MEDISON CO., LTD.

© 2018 Samsung Medison All Rights Reserved.  
Samsung Medison reserves the right to modify the design, packaging, specifications, and features shown herein, without prior notice or obligation.

CT-HS30 V1.0-EDA-180904-EN

# Value for the Basics

Ultrasound system  
**HS30**



Scan code or visit  
[www.samsunghealthcare.com](http://www.samsunghealthcare.com)  
to learn more



**EXPERIENCE**  
A New Healthcare  
Solution

**SAMSUNG**

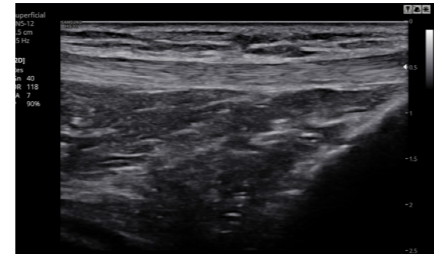
# Clear Imaging with Basic yet Versatile Tools

HS30 delivers a clear view and its basic tools are equipped to provide effective care and help necessary examination with versatile features.

## Clear Imaging Technologies

### ClearVision

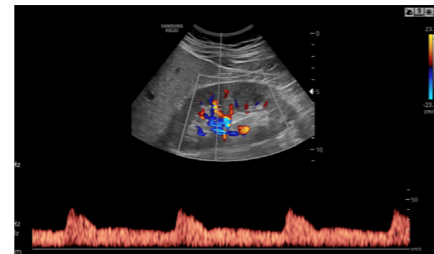
The noise reduction filter improves edge enhancement and creates sharp 2D images. ClearVision provides application-specific optimization and temporal resolution in live scan mode.



Knee with ClearVision

### S-Harmonic™

S-Harmonic™ using pulse inversion technology improves image clarity, near to far. Reducing signal noise, S-Harmonic™ provides more uniform ultrasound images.



Kidney color with S-Harmonic™

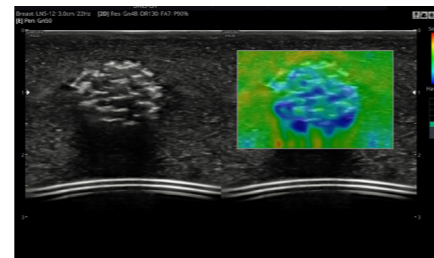
### S-Flow™

S-Flow™, a directional Power Doppler imaging technology, can help to detect even the peripheral blood vessels.

## Enhanced Tools

### ElastoScan™ \*

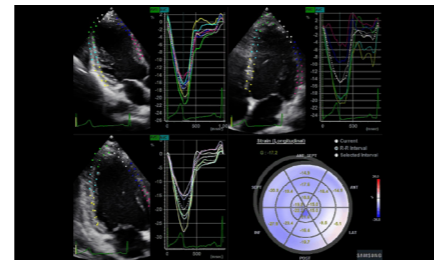
A diagnostic ultrasound technique for imaging elasticity, ElastoScan™ detects the presence of solid masses in tissues and converts any stiffness into color images.



ElastoScan™ (Phantom)

### Strain+ \*

Strain+ is a quantitative tool for global and segmental wall motion of the left ventricle (LV). In Strain+, three standard LV views and a Bull's Eye are displayed in a quad screen for an assessment of the LV-function.



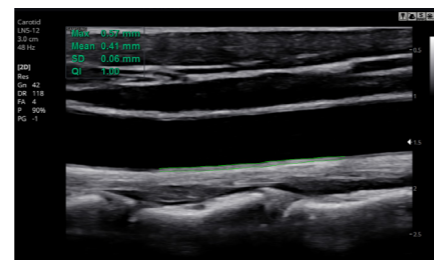
Strain+

### NeedleMate+™ \*

NeedleMate+™ helps needle targeting when performing commonly used intervention procedures.

### AutoIMT+ \*

AutoIMT+ is a screening tool to analyze a patient's potential risk of cardiovascular disease. It allows easy intima-media thickness measurement of both the anterior and posterior wall of the common carotid by the click of a button.



CCA with AutoIMT+

### Panoramic \*

Panoramic imaging displays an extended field-of-view allowing users to examine a wider area. Panoramic imaging also supports angular scanning with data acquired from the linear and convex transducer.

## Increasing Efficiency

### EzAssist™ \*

EzAssist™ provides the anatomical information of the human body at the screen to guide easy ultrasound scanning for untrained people.



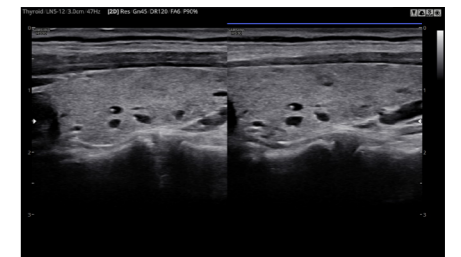
Kidney with EzAssist™

### EzExam+™ \*

EzExam+™ enables users to build or to use predefined protocols and could help users perform full investigation by eliminating the risk of forgetting an image or loop capture, as well as measurement and transducer preset changes.

### EzCompare™

EzCompare™ allows access to previously taken exams to evaluate corresponding views in a side-by-side display. EzCompare™ automatically matches the image settings, annotations, and bodymarkers from the prior study.



Thyroid with EzCompare™

## User-oriented Design

HS30 offers various user-oriented designs such as the additional storage space, and common keyboard to back up and make your clinical environment more comfortable.

### Rear Tray \*

HS30's rear tray provides extra storage space for the endo-cavity transducer and other items.



### Gel Warmer \*

Two-level adjustable gel warmer maintains ultrasound gel at a comfortable temperature.

### Side Pocket \*

The system side pocket is ideal for storing a tablet, patient charts, or other items that you need to keep close at hand.

### 21.5-inch LED Monitor

21.5-inch full HD LED display, delivers excellent contrast resolution, image clarity and vibrant color.

### Keyboard & Keyskin \*

The soft typing designed keyboard helps quick actuation and optimizes working environment. Keyskin for the keyboard and control panel is helpful to avoid any contaminants.



### Transducer Cable Hangers

Users can arrange the transducer cables neatly on the 2 hangers on either side of the system.



\* Optional Extra

\* Optional Extra